



Galfridus de BERRY
b. EST 1217, Berrynarbor, Devon

[P2119] James BURY

b. EST 1690
m. 25 December 1718 Sandford, Devon,

[P2120] Christian ELSTON

b. ABT 1691 Sandford, Devon,

[P2020] John BERRY

b. ABT 1721 Sandford, Devon,
m. 19 July 1752 Sandford, Devon,

[P2021] Elizabeth MORTIMER

b. ABT 1728 Sandford, Devon,

[P2013] George BERRY

b. ABT 1754 Sandford, Devon,
d. ABT May 1806 Sandford, Devon,

[P2014] Agnes COLLINS

b. ABT 1755 Sandford, Devon,
d. 1780
m. 9 June 1778 Sandford, Devon,

Ann ALFORD

b. 1752 Sandford , Devon,
d. 1791 Sandford , Devon,
m. 11 April 1803 Crediton , Devon,

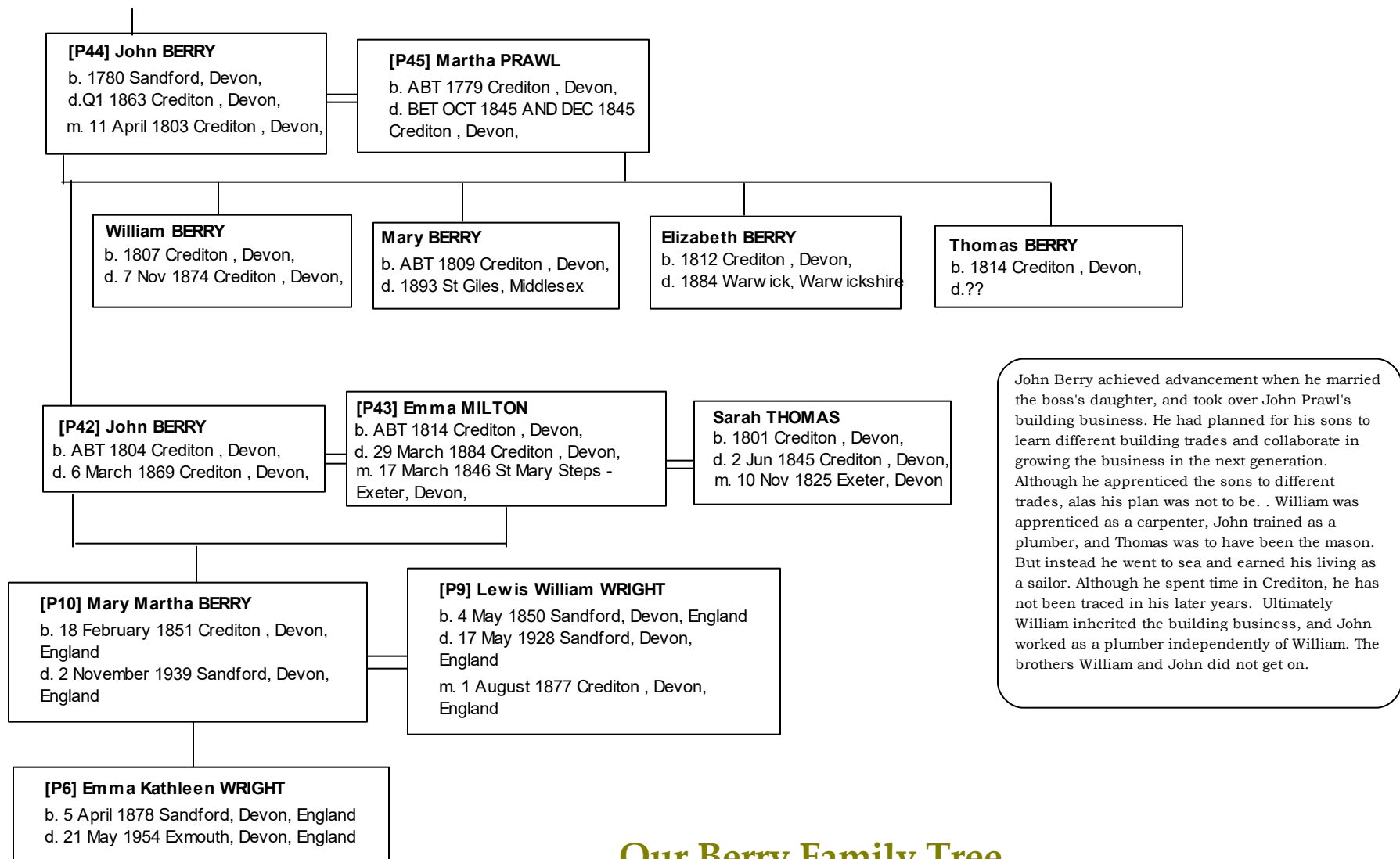
[P44] John BERRY

b. 1780 Sandford, Devon,
d.Q1 1863 Crediton , Devon,
m. 11 April 1803 Crediton , Devon,

[P45] Martha PAWL

b. ABT 1779 Crediton , Devon,
d. BET OCT 1845 AND DEC 1845
Crediton , Devon,

The Berry family may have settled in north Devon where the village of Berrynarbor is today when given land as a reward for a role in the Norman Conquest. By about 1217 one Galfridus de Berry was born in Berrynarbor. His descendants became lords of the manor there, and the family established branches at Crosscombe and Chittlehampton. The Berrynarbor family died out without a known male heir in 1708. However it is reckoned that Daniel Berry, Vicar of Molland and Knowstone was descended from a branch of the Berrynarbor Berrys. The origins of our earliest known James Bury who married in Sandford in 1718 are not known. However he may have been born in Crediton, and certainly my Berry forebears were of the opinion that he was descended from the North Devon Berrys.



Our Berry Family Tree